



ISSPAM

amU Public health sciences  
institute  
Aix Marseille Université



*Forming a community*

*Training through and for research*

*Connecting disciplines*

*Strengthening partnerships*

*Acting internationally*

A+Mides  
SaNg d'EnCRe  
Co-construction d'une revue participative  
comme outil de promotion de la santé

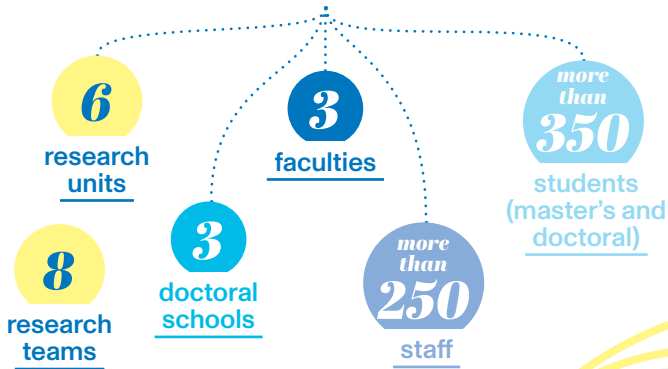


# ISSPAM

The Aix-Marseille institute for public health sciences (ISSPAM) aims to harness the synergies and potential of existing strengths in public health on the Aix-Marseille site. Its research and training missions are marked by a commitment to two main fields: social and territorial inequalities in health and public health science methods. ISSPAM's three priority areas of activity are: (i) characterisation of the population health and sources of vulnerability, (ii) interactions between the health system and populations and (iii) health mediation actions and practices.

Through its two fields of research and three priorities, ISSPAM aims to (i) develop structuring projects by acting as an incubator for projects, (ii) disseminate knowledge with spin-offs for public health decision-making, (iii) bring together socio-economic and cultural players in public health at regional and national level in a drive toward research-action/training and (iv) assert its specific fields of research nationally and internationally.

## Forming a community



## Social and territorial inequalities

### Health democracy and empowerment

### Community and population research

### Global health and methods

## Training through and for research

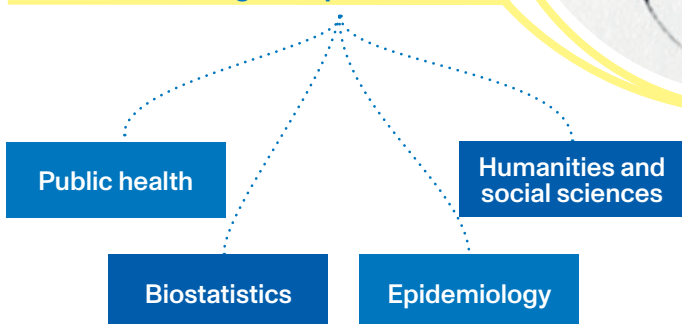
- ▶ Funding for incoming mobility grants
- ▶ An international summer school
- ▶ Teaching in hybrid format



## Acting internationally

- ▶ Funding incoming mobilities for students abroad
- ▶ Funding for outgoing mobilities for ISSPAM members
- ▶ International summer school (hybrid format)

## Connecting disciplines



### Funding for inter-laboratory projects

### Organisation of exchange days

## Strengthening partnerships

- ▶ CNRS
- ▶ INSERM
- ▶ IRD
- ▶ Santé Publique France
- ▶ ...



Watch the institute's animated film



The institute as seen by its members

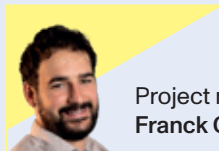
## Meet our executive office



Deputy research director:  
**Emmanuelle Le Barbenchon**



Director:  
**Roch Giorgi**



Project manager:  
**Franck Chamati**



Deputy training director:  
**Julie Berbis**

Discover the entire governance team:  
<http://url.univ-amu.fr/institut-ISSPAM-gouvernance>

## Focus on

### Our Public Health Action Days

Throughout the year, ISSPAM organises Public Health Action Days (JASP) on topical public health issues such as COVID, migrant populations and social inequalities in health. During these days, organised in a hybrid format, the institute aims to bring together all the public health players from the Aix-Marseille site, the region and beyond, to discuss current issues. These events provide a forum for meetings between various players from the academic world (research units and students) and non-academic players such as healthcare establishments (AP-HM, IPC, etc.), political players (Town Hall, Metropolis, Department, Region), healthcare agencies and bodies (ARS (regional health authorities, Santé Publique France), RHA, etc.), patient associations and manufacturers in the healthcare sector.

## Contact

Director: Roch Giorgi  
Project manager: Franck Chamati

[isspam-contact@univ-amu.fr](mailto:isspam-contact@univ-amu.fr)

[www.univ-amu.fr/isspam](http://www.univ-amu.fr/isspam)





# Training at ISSPAM

**amU** Public health sciences  
institute  
Aix Marseille Université

*Training for, through and in research,  
with continuity from master's to doctorate level*

*Training for, through and in research,  
with continuity from master's to doctorate level*

## Our ecosystem

More than  
**300**

master's  
students<sup>1</sup>

**3**

partner  
faculties

► Faculty of medical and  
paramedical sciences (SMPM)

► Faculty of arts, letters,  
languages and humanities  
(ALLSH)

► Faculty of economics and  
management (FEG)

over  
**50**

PhD  
students<sup>2</sup>

**3**

partner  
doctoral  
schools

► Life and health  
sciences (ED 62)

► Cognition, language  
and education (ED 356)

► Economic and  
management science  
(ED 372)

**10**

key master's

- Public health
  - Artificial intelligence for public health (AI4PH)
  - Quantitative and econometric methods for health research (MQERS)
  - Public health society development (SPSD)
  - Disability and health
  - Management of healthcare organisations and Management of quality and safety of care
  - Epidemiology
- Medical humanities
  - Ethical, deontological and anthropological approaches to healthcare
- Psychology
  - Social psychology of health
  - Social psychology of work and organisations (PSTO)

**1**

interdisciplinary  
doctoral  
programme

Consult all master's  
degree  
specialisations:



<sup>1</sup> students enrolled on master's specialisations attached to the institute  
<sup>2</sup> doctoral students enrolled in our partner doctoral schools



**Chimène Amayene**  
Master's student

*"Thanks to the Tiger grant, I was able to take part in a field school that enabled me to do a high-quality Master's degree in public health research by giving me the opportunity to learn the theoretical foundations of quantitative methods so that I could apply them in the healthcare field. Then, as a student at ISSPAM, I was lucky enough to attend theme days on very topical fields, with contributions from researchers and key socio-economic players. I intend to continue in research if possible or enter the world of work as a biostatistician."*

## Our key actions

- Organisation of an annual summer school
- Incoming mobility grants for foreign students
- Face-to-face and distance learning for students abroad
- Funding for doctoral contracts
- Organisation of exchange days between students, academics and players from the socio-economic and cultural world (Public Health Action Days - JASP)
- Creation of the PLADISSPAM educational platform: ISSPAM Data Collection and Analysis Platform

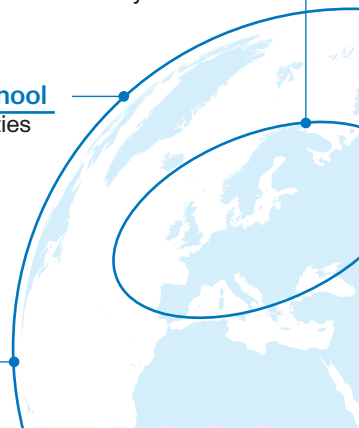
## Our international training initiatives

**CIVIS alliance**  
European civic  
university

**1 international summer school**  
18 different nationalities

100% English-language  
Master's specialisation

2 Master's specialisations open  
to students from developing  
countries



## Contact

Deputy Training Director: Julie Berbis

isspam-contact@univ-amu.fr

www.univ-amu.fr/isspam





# Research at ISSPAM

**amU** Public health sciences  
institute  
Aix Marseille Université

*Bringing together the strengths in public  
health of the Aix-Marseille  
site to consolidate our international  
scientific position*



*Bringing together the strengths in public health of the Aix-Marseille site to consolidate our international scientific position*

## Research ecosystem

8

research teams

in

6

research units

### Health and life sciences

- ▶ Bio-cultural anthropology, law, ethics and health (ADES)
- ▶ Centre for study and research on health services and quality of life (CEReSS)
- ▶ Health economics and social sciences and medical information processing (SESSTIM)

### Humanities and social sciences

- ▶ Norbert Elias centre (CNE)
- ▶ Laboratory for social psychology (LPS)

### Economy

- ▶ Aix-Marseille school of economics (AMSE)



## Our chief areas of research

- ▶ Two main fields...
  - ▶ Research-actions on social and territorial inequalities in health
  - ▶ Methods in public health sciences
- ▶ ... broken down into three priority areas
  - ▶ Area 1: characterisation of the population health and sources of vulnerability
  - ▶ Area 2: interactions between the health system and populations
  - ▶ Area 3: health mediation actions and practices

## Our key actions

- ▶ Creation of the PLADISSPAM platform (ISSPAM Data Collection and Analysis Platform):  
A platform for training in the collection and analysis of quantitative, narrative and qualitative public health data, based around transdisciplinary projects and geared towards research training for students in public health, the humanities and social psychology
- ▶ Support for the structuring and funding of inter-laboratory research projects via the institute's calls for projects
- ▶ Funding for outgoing mobilities
- ▶ Support for the funding of scientific events
- ▶ Joint funding for postdoctoral contracts
- ▶ Support for junior doctoral students to take part in specialised schools

*"I'm coordinator of the RAMRES project, which was awarded the institute's INITIATION call for projects. This project addresses issues of discrimination in healthcare, and more specifically what we call medical racism, an emerging research topic within our unit.*

*The support of ISSPAM means we were able to create a network of researchers and professionals in the field during a study day dedicated to these issues. This also enabled us to respond to a national call for projects and propose a thesis topic.*

*ISSPAM has also facilitated the development of collaborations with colleagues from another team at the institute, to encourage a plurality of perspectives on our health research questions."*



**Bouchra Zouhri**  
Laboratory for social psychology (LPS)

## Contact

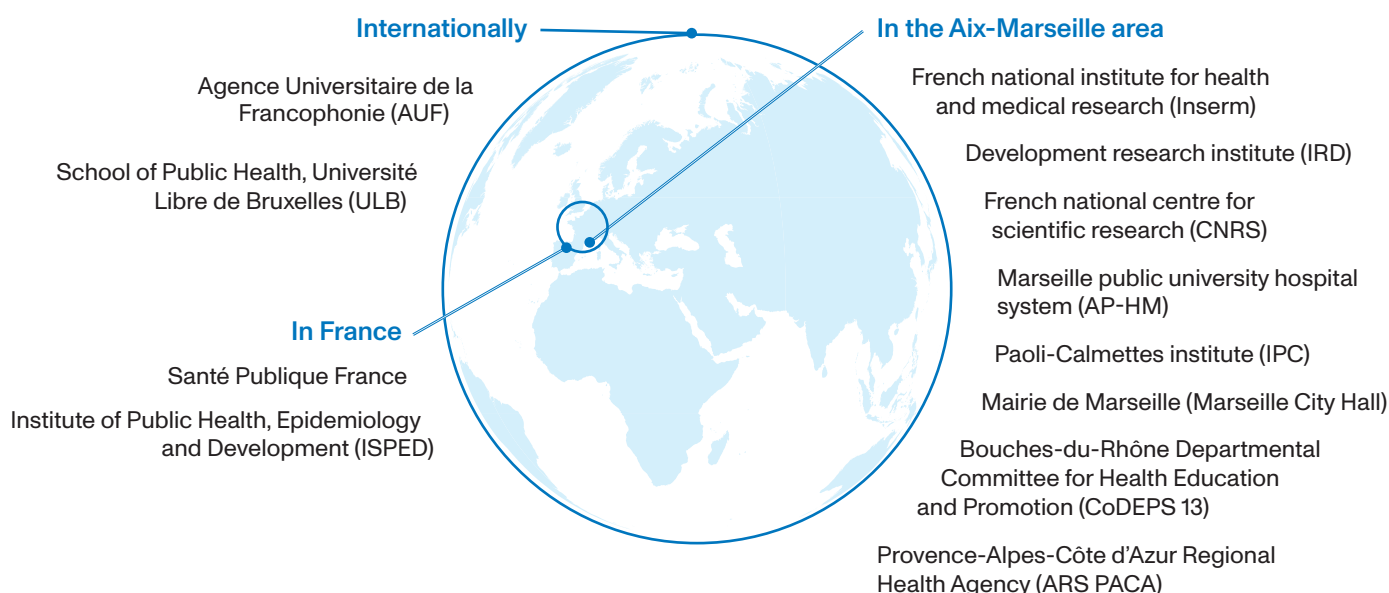
## Strengthening and developing special links with academic and institutional players and the socio-economic and cultural world

"As part of my role, I lead the ISSPAM-MSEC working group, which aims to develop partnerships with the socio-economic and cultural world (MSEC). These partnerships can take many forms, specifically in terms of research, with the setting up of research projects, training with proposals for internships and funding for CIFRE doctoral grants, and finally, in terms of science outreach, with the setting up of science popularisation projects with associations or foundations."



Parina Hassanaly  
Programme Manager, ISSPAM

### Our key partners include



### Our key actions

**MEDIATE4HEALTH**, a structured healthcare mediation project involving local and national partners

Journées Actions en Santé Publique (JASP - Public Health Action Days): a meeting place for national public health players

**4**  
events  
organised in  
2022-23

Joint funding for doctoral and postdoctoral contracts

Call for projects "Boost" ISSPAM - Support for structuring projects with incubator potential"

### Contact

Director: Roch Giorgi  
Project manager: Franck Chamati

[isspam-contact@univ-amu.fr](mailto:isspam-contact@univ-amu.fr)

[www.univ-amu.fr/isspam](http://www.univ-amu.fr/isspam)







*The ISSPAM institute brings together teams  
on 4 university and scientific sites*



Graphic design: DIRCOM AMU | October 2024 | Photo credits: Escalante, Sarah Chambon, Jean Fondacci and Aix-Marseille Université (Eléa Ropio).

The Aix Marseille Université institutes are coordinated by the Amidex foundation



The Aix-Marseille Excellence Initiative, a consortium between Aix Marseille Université and 8 partners

